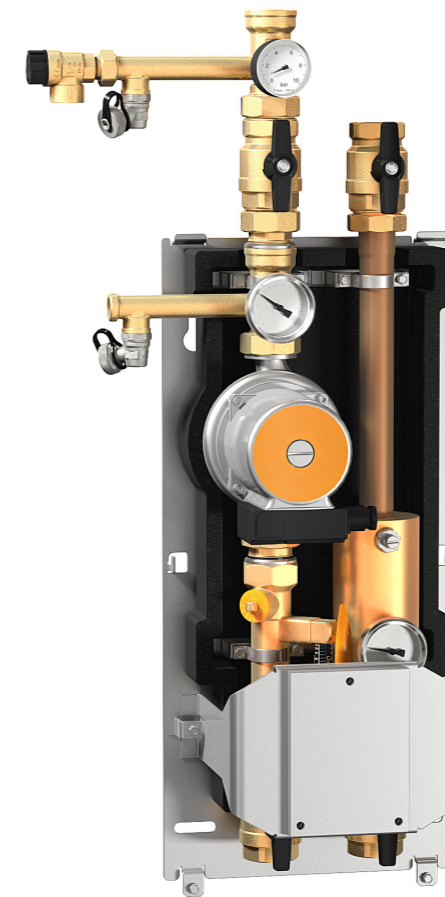


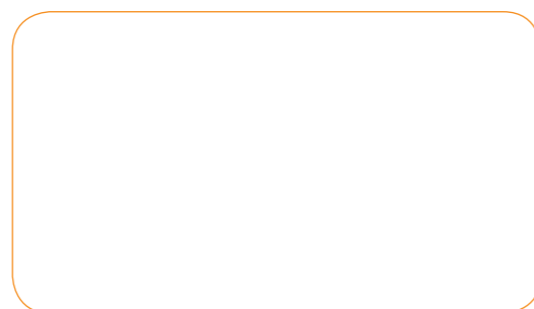
GP 8000



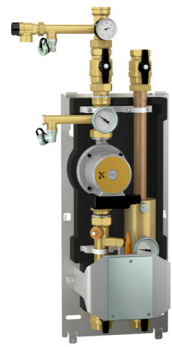
Gruppo solare per grandi portate
High-flow rate solar group



I.V.A.R. S.p.A. - Via IV Novembre, 181 - 25080 Prevalle (BS) Italy
Tel. +39 030 68028 Fax +39 030 6801329
www.ivar.eu - info@ivar.eu



GRUPPO DI CIRCOLAZIONE A DUE VIE PER GRANDI PORTATE



Gruppo di circolazione con linea di mandata e ritorno solare. Completo di valvole di intercettazione, termometri, valvola di ritegno sul ritorno, valvola di sicurezza 6 bar, pompa solare Grundfos SOLAR 25-120 interasse 180 mm, disaeratore, rubinetti di carico e scarico. Disponibilie senza o con misuratore e regolatore di flusso 20-70 l/min, anche in una versione speciale progettata per un facile assemblaggio con altri gruppi gemelli in parallelo.

Codici

COD.	Gruppo per connessione in parallelo	Flussimetro 20-70 l/min
GP8000		
GP8000K	■	
GP8000F		■
GP8000FK	■	■

CARATTERISTICHE TECNICHE

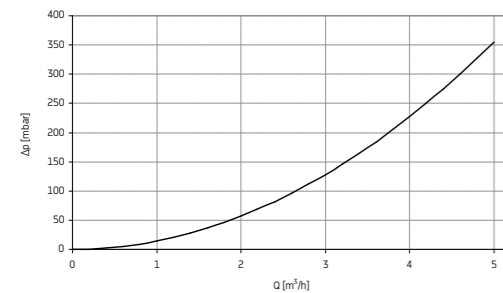
Max. temperatura operativa in continuo: 130 °C
 Range limitatore di flusso (codici GP8000F e GP8000FK): 20-70 l/min
 Range termometri: 0-160 °C
 Pressione taratura valvola di sicurezza: 6 bar
 Range manometro: 0-10 bar
 Fluido di lavoro: acqua/glicole max 50%
 Attacchi: 1 ¼" F tenuta piatta
 Ingombri: 825 x 414 x 224 mm

MATERIALI

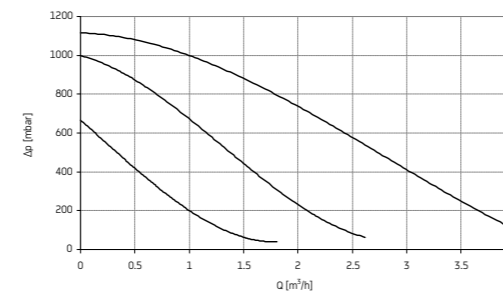
Flussimetro (cod. GP8000F e GP8000FK), valvola di sicurezza e altre parti in ottone: CW617N
 Tubazioni: rame semicrudo
 O-ring: terpolimero TFE HFP VDF
 Guscio di isolamento: polipropilene
 Telaio di supporto e copertura: alluminio AW 5754

CARATTERISTICHE IDRAULICHE

Gruppo solare

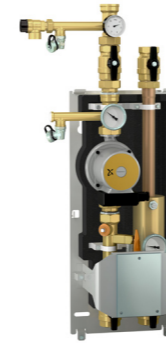


Pompa



Connessioni: 1 ½" M tenuta piatta
 Interasse: 180 mm
 Classe di temperatura: TF 95 (max temp. di picco 110 °C)
 Massima pressione operativa: 10 bar

TWO-WAY CIRCULATION UNIT FOR HIGH FLOW RATES



Solar circulation unit with flow and return line. Complete with shut-off valves, thermometers, check valve on the return, 6 bar safety valve, Grundfos SOLAR 25-120 solar pump with centre distance of 180 mm, deaerator, loading and draining taps. Available without or with 20-70 l/min flow measuring and regulating device, also in a special version designed for easy assembly with other twin units in parallel.

Codes

COD.	Cascade unit	20-70 l/min flow meter
GP8000		
GP8000K	■	
GP8000F		■
GP8000FK	■	■

TECHNICAL FEATURES

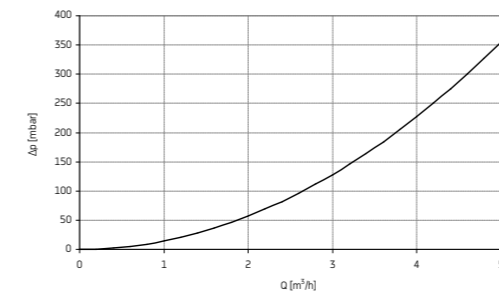
Max operating temperature in continuous: 130°C
 Flow limiter range (codes GP8000F and GP8000FK): 20-70 l/min
 Thermometer range: 0-160
 Safety valve calibration: 6 bar
 Pressure gauge: 0-10 bar
 Work fluid: water/glycol max 50%
 Connections: 1 ¼" F flat seal
 Clearances: 825 x 414 x 224 mm

MATERIALS

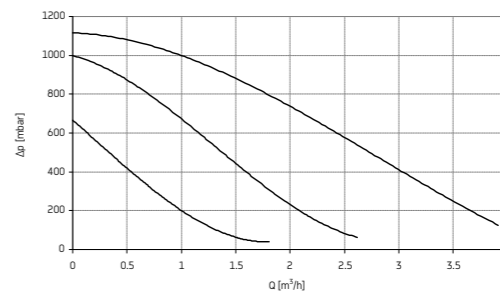
Flow meter (code GP8000F and GP8000FK), safety valve and other brass parts: CW617N
 Piping: half-hard copper
 O-ring: terpolymer TFE HFP VDF
 Insulating shell: polypropylene
 Frame and cover: aluminium AW 5754

HYDRAULIC FEATURES

Solar unit



Pump



Connessioni: 1 ½" M flat seal
 Centre distance: 180 mm
 Temperature class: TF 95 (max peak temp. 110)
 Maximum operating pressure: 10 bar