

Flat roof system east-west II

OUR SOLUTION FOR THE EAST-WEST-FACING DIRECTION

With our east-west II mounting system, you can optimise the use of the surface area of your flat roof: Compared to south-facing elevations, you can install nearly twice the module surface area. Electricity production is thus distributed more evenly throughout the entire day. The east-west II mounting system is a very secure and stable system for flat roofs with a pitch of up to 5° – and, what is more, it is quick and easy to assemble.

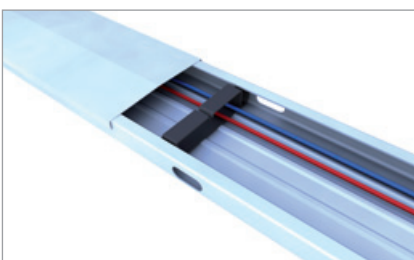
The mounting system is fixed on the roof with its own weight and, if necessary, ballast stones, although the optimised aerodynamics of our system require little to no ballasting: an advantage for flat roofs with low load reserves.

The mounting system consists of only a few components. The substructure is installed in a modular grid. The base foot and the module support are clicked together, and the module fastened by the short side of the frame. The base rail, which can also be used as a cable channel, has rounded edges and a separation layer to protect the roof membrane. The system is installed on foil and bitumen roofs and can also be installed on gravel roofs.

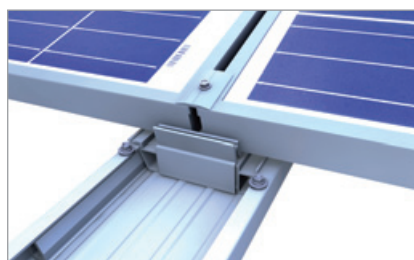
Our various supports allow us to tailor solutions to the specific loads – even in the case of heavy load requirements. Per default, we can subject the east-west II mounting system to loads of 2.4 kN/m², and with a module clamp on the long side, even up to 4.8 kN/m².

YOUR BENEFITS

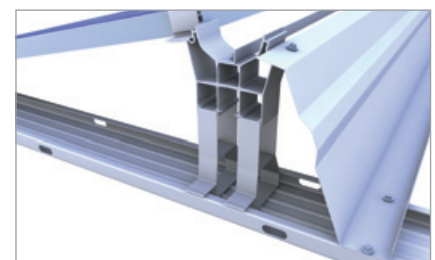
- Secure, stable and quick to install
- Wind-tunnel tested aerodynamics
- No penetration of the roof membrane
- Minimal ballasting
- For roof pitches of up to 5°
- More module surface area possible
- Wide base rail with rounded edges
- Ballast trough for large-format stones
- Double support for heavy loads
- Rail with pads for cross drainage
- Only three clamps for all frame heights
- Simple, Eurocode-compliant layout with our Solar-Planit online tool



Base rail with cover and cable holder



Base foot in base trough with connector

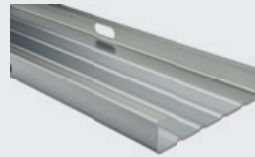


Wind deflector east-west for roof obstacles



BASIC COMPONENTS

Base trough



item no. 218005

Connector set
base trough



item no. 218036

Aluminium edge protector
Self-adhesive



item no. 218084

Flat roof mounting screw



item no. 218033

Base foot



item no. 218091

EAST-WEST-FACING VARIANT

Module support



item no. 218107

Ballast redistribution



item no. 218105

Module attachment



item no. 218103



item no. 218094



item no. 218100

BayWa r.e. Solar Energy Systems GmbH | Eisenbahnstraße 150 | D-72072 Tübingen

Phone +49 7071 98987-0, Fax +49 7071 98987-10, solarenergysystems@baywa-re.com
www.baywa-re.com, solarenergysystems.baywa-re.com, novotegra.baywa-re.com

