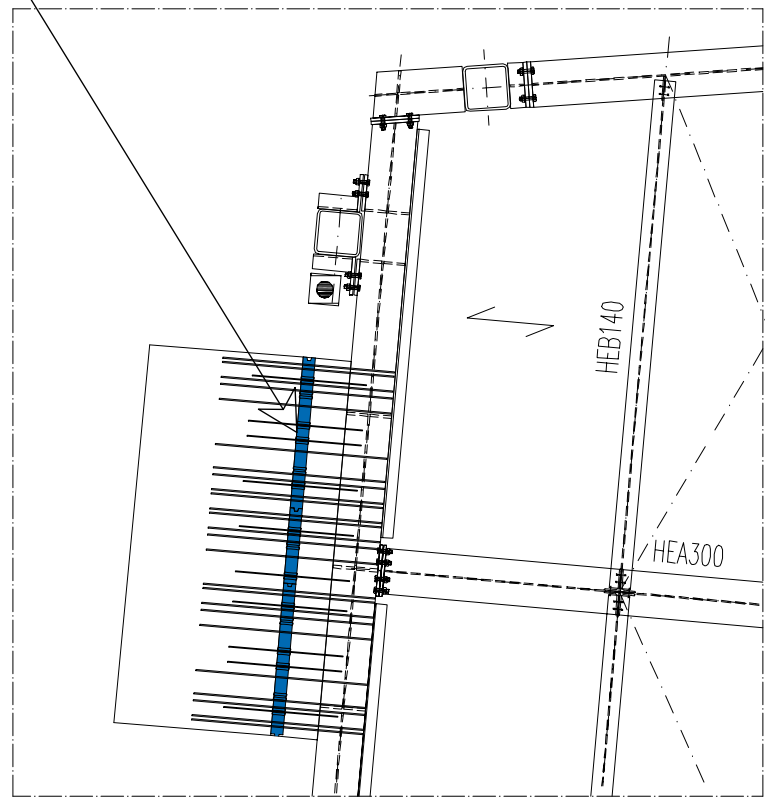
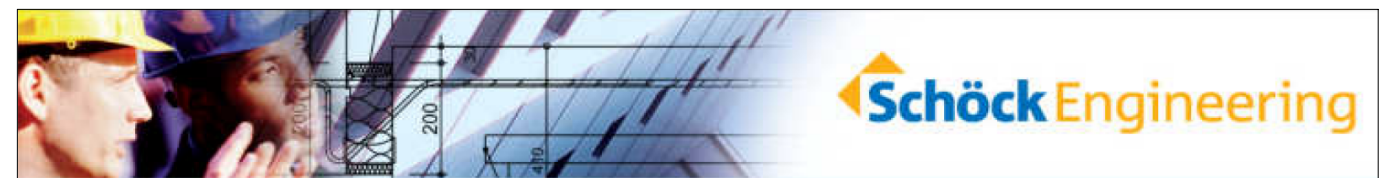
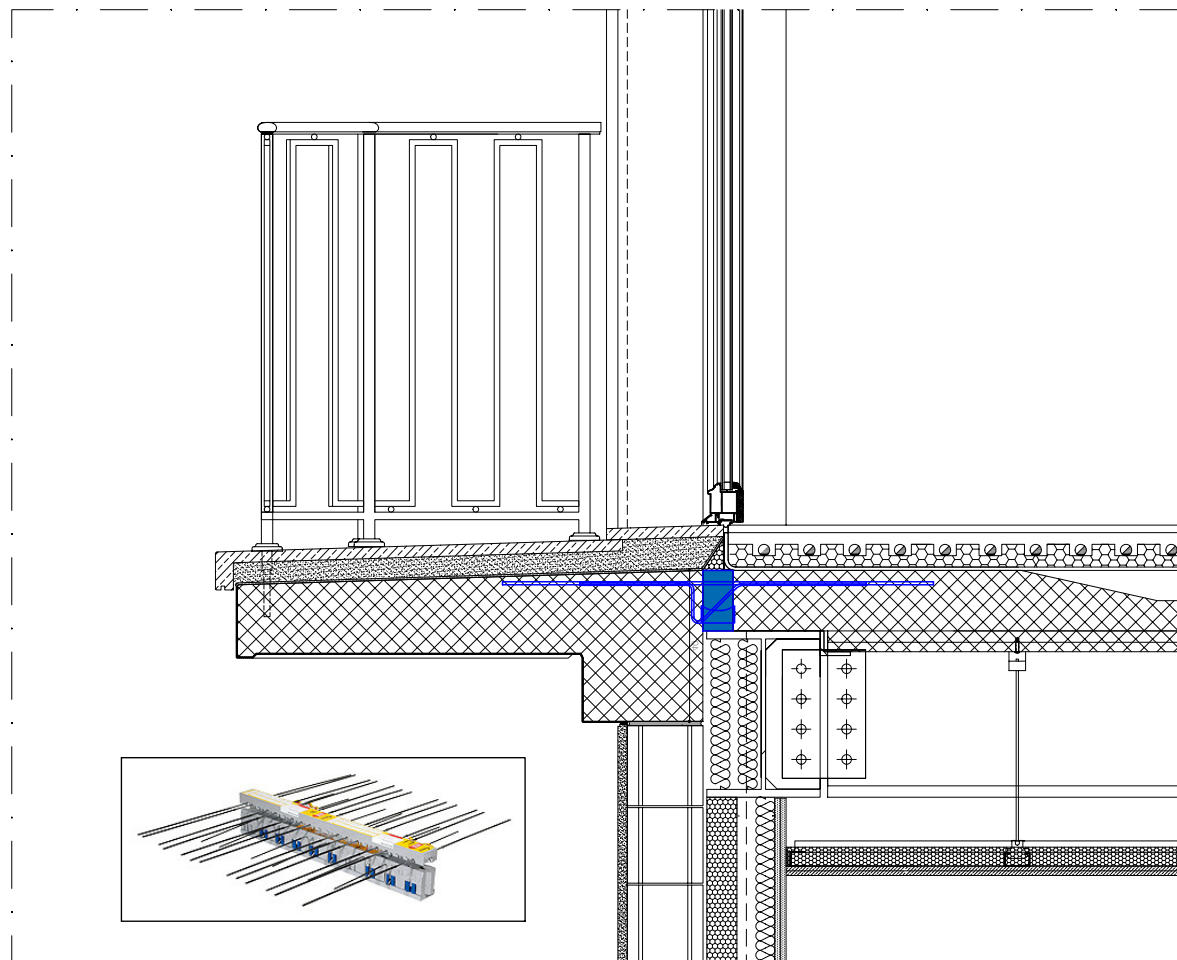
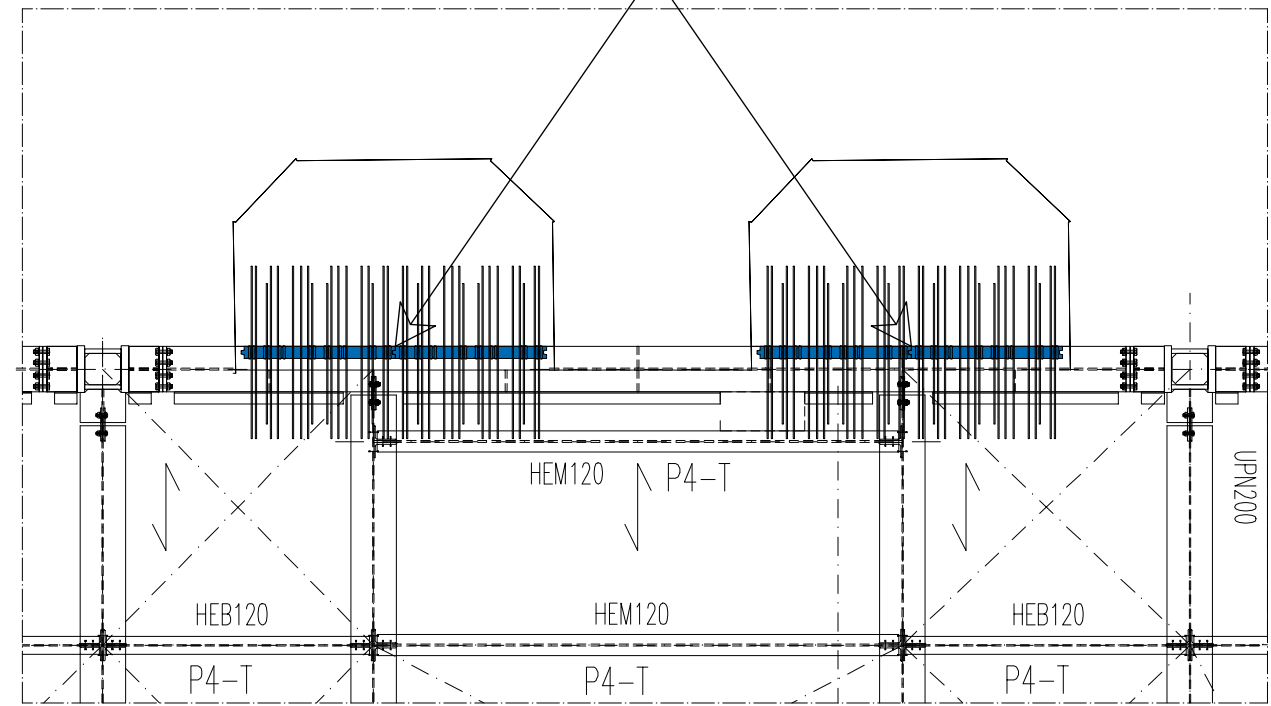


Schöck Isokorb tipo A-K 10/6-h160



Schöck Isokorb tipo A-K 12/6-h160



Codice progetto : RSA051-20100319

Progetto : Cosmo Hotel Spa - Milano (MI)

Data : 19.03.2010

SCHÖCK Italia -Ufficio Tecnico

Scala 1:50 / 1:20